

The First and The Foremost Choice





PUMPS SERIES



SELF PRIMING NON CLOG PUMP "SG" SERIES

Application

Sewage, Effluent Disposal, Slurry Handling, Irrigation, Horticulture, Marine Application
Civil Construction Sites, Mobile Machinery, Public Utilities

Technical Data

Capacity	: up to 75 m ³ / hr.
Head	: up to 35 mtr.
Suction Head	: up to 7.5 mtr.
Material	: CI, Bronze, Gun Metal, Stainless Steel and Other Alloys
Viscosity	: up to 100 mm ² / Sec.
Max. Solid Hand Size	: up to 25 mm
Sealing	: Soft Gland Packing

MECH. SEAL FITTED "SM" SERIES

Application

Dewatering Swamp, Trenches & Basements, Effluent Treatment Plants, Swimming Pools,
Marine Application, Transfer for Petrol, Diesel, Kerosene, Sprits, Gasols etc.

Technical Data

Capacity	: 75 m ³ / hr.
Head	: up to 35 mtrs.
Suction Head	: up to 7.5 mtrs.
Material	: CI, Bronze, Gun Metal, Stainless Steel and Other Alloys
Viscosity	: up to 100 mm ² / Sec.
Max. Solid Hand Size	: up to 25 mm



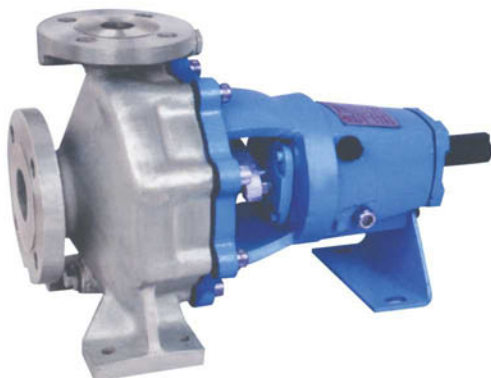
CHEMICAL PROCESS PUMP "CPC" / "CPC-A" SERIES

Application

The chemical process pump "CPC" is widely used for chemical, Petrochemical industries.
Media which can be easily pumped are Acids, Caustic, Amonia, Phoshate, Dyes, Oils,
Solvents, Alcohol, Aromatics etc. Also suitable for Textile, Food, Paper & Pulp,
Pharmaceuticals etc.

Technical Data

Max. Capacity	: 400 m ³ /hr. Max.
Head	: 150 mtr.
Pressure	: upto 16 bar
Temperature	: 200 °C
Material	: CI, CS, SS-304, SS-316 Other alloys
Impeller	: Closed / Semi Open
Flanges	: As per ISO 7005 & ANSI-B-16.5 PN16



CENTRIFUGAL PUMP

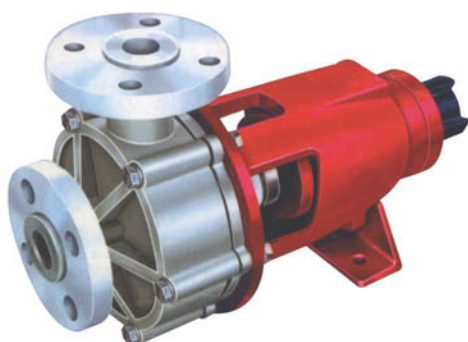
"CP" SERIES

Application

Various application included transfer circulation pump for cold and hot water system, Marine installation, Fire fighting application, Irrigation, Agriculture etc.

Technical Data

Max. Flow	: 400 m ³ /hr.
Max. Head	: 100 mtr.
Max. Pressure	: up to 16 bars
Max. Temp.	: 200 °C
Standard Material	: CI, Bronze & Gun Metal
Shaft & Shaft Sleeve	: Stainless Steel
Impeller Type	: Closed / Semi Open



CENTRIFUGAL POLYPROPYLENE PUMP

AXP SERIES

Application

Water treatment Plant, Effluent treatment plant, Transfer and Loading / unloading like HCL, Sulphuric acid, Caustic Liquid. Scrubbing of corrosive gasses like NH₃, CO₂, SO₂, L₂, F₂, BR₂ etc. Filter press for dyes & chemicals. Circulation of Chemicals in metal finishing industry.

Technical Data

Head	: 45 Mtr.
Flow	: 50 m ³ / hr.
Temp	: 65-70 °C
M.O.C.	: PP, UHMWPE
RPM	: 1440 - 2880 RPM
Type	: Mechanical Seal / Gland Type

CENTRIFUGAL POLYPROPYLENE PUMP

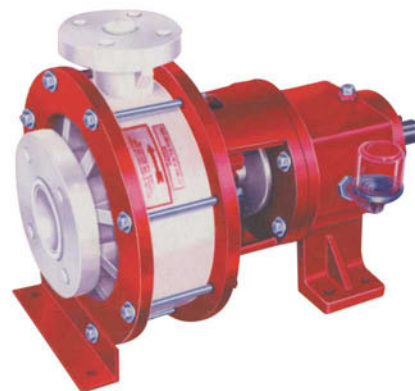
APPL SERIES

Application

Water treatment Plant, Effluent treatment plant, Transfer and Loading / unloading like HCL, Sulphuric acid, Caustic Liquid Scrubbing of corrosive gasses like NH₃, CO₂, SO₂, L₂, F₂, BR₂ etc. Filter press for dyes & chemicals. Circulation of Chemicals in metal finishing industry.

Technical Data

Head	: up to 65 mtr.
Flow	: up to 300 m ³ / hr
Temp	: Max. 80 °C
M.O.C.	: PP, UHMWPE
RPM	: 1440 / 2900 RPM
Type	: Mechanical Seal / Gland Type



VERTICAL POLYPROPYLENE PUMP

AVPP SERIES

Application

Treatment plant, electro plating & Steel rolling mills, Loading - unloading like HCL, Sulphuric acid / Alkali, Caustic liquid Scrubbing of corrosive gasses like Cl₂, NH₂, BR₂, etc.; Ideal for circulation of chemical in metal finishing industry ,

Technical Data

Head	: 50 mtr
Flow	: 45 m ³ / hr
Temp	: 70 °C
M.O.C.	: PP, UHMWPE
RPM	: 1440 & 2880 RPM
Pressure	: 5 kg / cm ²

Note : Seal less gland less

ROTARY GEAR PUMP WITH HELICAL GEAR

AGP SERIES

Application:

To deliver variety of light and viscous liquid such as Oil, fats, Coal tar, Paints, Molasses. Highly viscous materials and liquids. Paints, Ammonia, Glycerin, Grease etc.;

Technical Data

Head : 120 mtr
Flow : 200 m³ / hr
Temp : 250 °C
M.O.C. : CI, CI/SS, SS 304, SS 316, SS 316L, Bronze
RPM : 1440 RPM
Type : Mechanical Seal / Gland Type



HORIZONTAL SIDE SUCTION PUMP

AFPP SERIES

Application

Filter press feeding, Dyes & Intermediates, Slurry transfer
Cake transfer, ETP Plant, Sugar & Food Industries

Technical Data

Head : 70 mtr
Flow : 110 m³ / hr
Temp : 110 °C
M.O.C. : CI, CI/SS, SS 304, SS 316, SS 316L, Bronze, Alloy 20 etc.
RPM : 1440 & 2880 RPM
Type : Mechanical Seal / Gland Type

Note : Only Positive Suction Head



MONO BLOCK PUMP

AMBP SERIES

Application

Cooling tower, Water supply for domestic use in apartments, Hostels, Swimming pools, Automobile service station.
Power plant, Railway Line

Technical Data

Head : 60 mtr
Flow : up to 120 m³ / hr
M.O.C. : CI, CS, SS 316
RPM : 2900 RPM
Power Rating : Single Phase & Three Phase



AIR OPERATED DOUBLE DIAPHRAGM

AODD SERIES

Application

Solvents, Slurry transfer, Barrels, Acidic Materials, High viscous liquid, Abrasive media

Technical Data

Head : 50 mtr
Flow : 45 m³ / hr
Temp : 120 °C
M.O.C. : Investment Casting CF8M (SS-316), Aluminum, PP, PVDF
Max. Particle Size : 6.35 mm
Air Pressure : Max. 7 kg/cm²
Air Inlet Size : 1/4 to 1/2"
Air Exhaust : 3/4 to 1/2"
Suction Lift : Dry : 4.57 meter / Wet : 7.6 m
Teflon : Dry : 3.05 m / Wet : 6.09 m



HIGH PRESSURE MULTI STAGE BOILER FEED PUMP

ABFP SERIES

Application

Boiler feed, Marine, Fuel oil, Power Plant, Industrial clear water
Condensate Water, Multi storied building water supply

Technical Data

Head : 250 mtr
Flow : 20 m³ / hr
Temp : 105 °C
M.O.C. : CI, CS, Bronze, CI/SS



PULP & PAPER MILL PUMP

'P' SERIES

Application

Pulp and Paper Industries
Chemical & Process Industries
Palm Oil Mills & Refineries
Waster Water Treatment
Sugar Mill

Technical Data

Flow : 4000 m³ / hr
Head : 140 m
Pressure : 16 bar
Temp : 140 °C
Speed : 3000 RPM

Triea and Tested

in the pulp industry for conveying
Chemical Pulp
Mechanical Pulp
Recycled Fibers
Caustic, lye
Fibrous Sludge
Food Industry
Sewage Water Treatment

VERTICAL LONG SHAFT SUMP PUMPS

AVSP SERIES

Application

The "Active" sump pump is suitable for handling hin, clean or slightly contaminated liquids, such as water, Cooling water, Effluent, Cleaning products, Chemicals and hydrocarbons.Sulphuric acid application, Acid transfer, Aquariums, Chemical processing, Chloralkali,General processing industry, Light slurries, Organic chemicals, Polymers, Petrochemical processing, Slurries, Solvents, Waste processing.

Technical Data

Capacity : up to 325 m³ / hr
Head : up to 60 Mtr.
Discharge Size : 25 mm to 125 mm
Temperature : 60 °C
Pump Length : up to 4 Mtr.
Speed : up to 3500 rpm
Pressure : up to 6 kg/cm²
M.O.C. : C.I., C.S., SS-304 / 304L, SS316 / 316L, Bronze, Alloy-20, CD4MCU, Hast alloy B & C, etc.



THERMIC FLUID PUMP



AIR COOLED HOT OIL PUMP



SELF PRIMING MUD PUMP





MECHANICAL SEALS FOR PUMPS

A10U



Applications

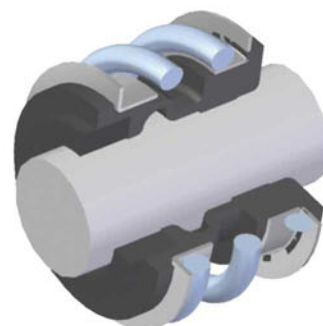
- Submersible pump
- Sewage pump
- Water pumps

Seal Characteristics

- Single acting
- Unbalanced
- Single helical coil spring
- Independent of direction of rotation

Operating Limit

Temperature : -20.....+180 °C
Pressure : 12 Bar (Max.)
Velocity : 20 m/sec



A20U



Applications

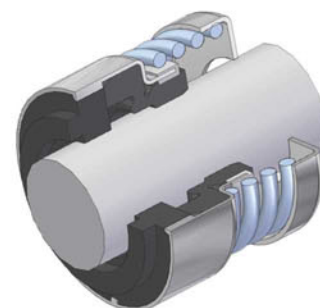
- Submersible pump
- Water pumps

Seal Characteristics

- Single acting
- Unbalanced
- Single helical coil spring
- Independent of direction of rotation

Operating Limit

Temperature : -20.....+180 °C
Pressure : 12 Bar (Max.)
Velocity : 20 m/sec



A30U



Applications

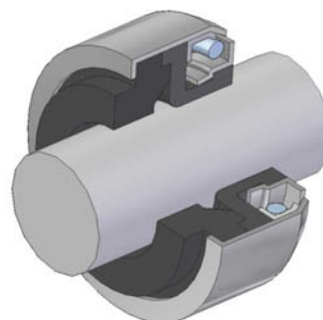
- Submersible pump
- Water pumps
- Water and waste water technology

Seal Characteristics

- Single acting
- Unbalanced
- Single conical coil spring
- Short axial installation length

Operating Limit

Temperature : -20.....+120 °C
Pressure : 6 Bar (Max.)
Velocity : 10 m/sec



A45U



Applications

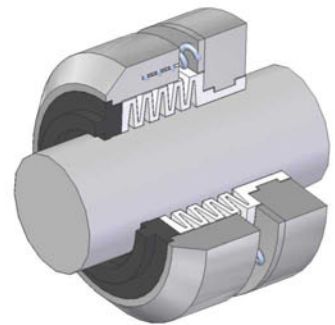
- Extremely corrosive services

Seal Characteristics

- Single acting
- Unbalanced
- Outside mounted
- Multiple spring

Operating Limit

Temperature : -45.....+120 °C
 Pressure : 6 Bar (Max.)
 Velocity : 20 m/sec



A50B



Applications

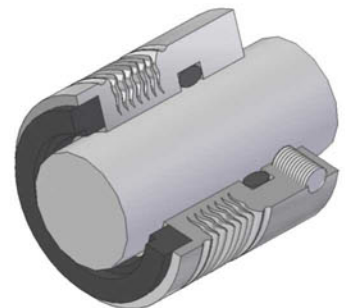
- Chemical
- Petrochemical
- Refinery
- Corrosive chemicals

Seal Characteristics

- Single acting
- Inherently balanced
- Inside mounted

Operating Limit

Temperature : -20.....+200 °C
 Pressure : 18 Bar (Max.)
 Velocity : 20 m/sec



A55B



Applications

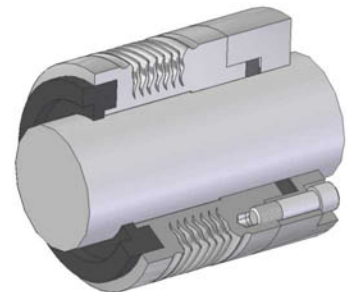
- Petrochemical
- Petroleum refinery
- Refinery

Seal Characteristics

- Single acting
- Inherently balanced
- Inside mounted

Operating Limit

Temperature : -20.....+350 °C
 Pressure : 20 Bar (Max.)
 Velocity : 20 m/sec



A65U WEDGE & A60U O-RING A65B WEDGE & A60B O-RING



Applications

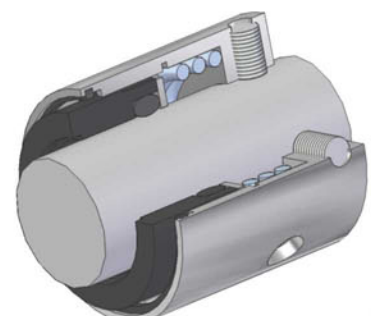
- General Chemicals
- Petrochemical
- Light Hydrocarbons
- Petroleum refinery

Seal Characteristics

- Single acting
- Unbalanced / Balanced
- Inside mounted
- Single helical coil spring
- Independent of direction of rotation

Operating Limit

Temperature : -60.....+200 °C
 Pressure : 10 / 35 Bar (Max.)
 Velocity : 20 m/sec



A75U WEDGE & A70U O-RING A75B WEDGE & A70B O-RING



Applications

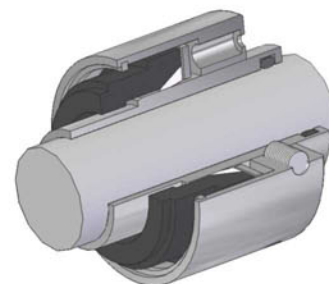
- General Chemicals
- Petrochemical
- Light Hydrocarbons
- Petroleum refinery

Seal Characteristics

- Single acting
- Unbalanced / Balanced
- Inside mounted
- Multi spring
- Independent of direction of rotation

Operating Limit

Temperature : -60.....+200 °C
Pressure : 10 / 35 Bar (Max.)
Velocity : 20 m/sec



A77RB



Applications

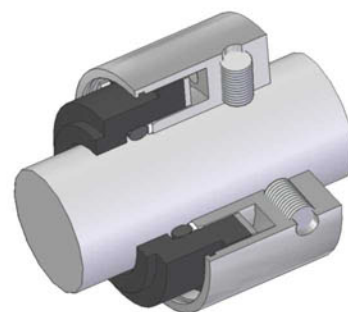
- Corrosive chemical
- Hydrocarbons
- General & light chemical

Seal Characteristics

- Single acting
- Reverse balanced
- Outside mounted
- Multi spring
- Independent of direction of rotation

Operating Limit

Temperature : -60.....+180 °C
Pressure : 25 Bar (Max.)
Velocity : 20 m/sec



A85U V-PACKING & A80U O-RING



Applications

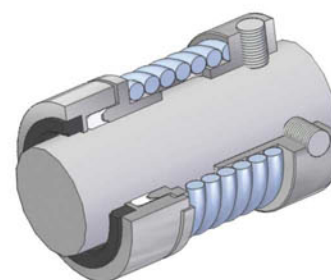
- Suspended solids slurry
- General chemical slurry
- Crystallizing slurry
- Saturated chemical slurry

Seal Characteristics

- Single acting
- Unbalanced
- Inside mounted
- Single helical coil spring
- Independent of direction of rotation

Operating Limit

Temperature : -20.....+200 °C
Pressure : 14 Bar (Max.)
Velocity : 20 m/sec



A100U



Applications

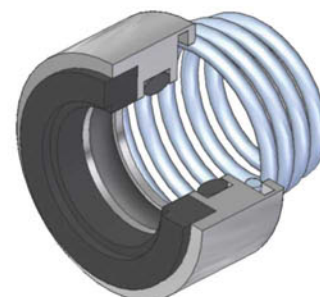
- Circulation pumps for central heating
- Sewage & submersible pumps
- Water pumps
- Chemical process pumps

Seal Characteristics

- Single acting
- Unbalanced
- Inside mounted
- Single conical coil spring
- Dependent of direction of rotation

Operating Limit

Temperature : -20.....+120 °C
Pressure : 10 Bar (Max.)
Velocity : 20 m/sec



A110U



Applications

- Circulation pumps for water and heating systems
- Chemical process pumps
- Submerged pumps
- Sewage pumps
- Mud slurry pumps handling highly viscous fluids
- Textile industry

Operating Limit

Temperature : -50.....+175 °C
 Pressure : 10 Bar (Max.)
 Velocity : 20 m/sec

Seal Characteristics

- Star seal
- Single acting
- Unbalanced
- Inside mounted
- Single helical coil spring
- Independent of direction of rotation

A130B



Applications

- Easy to maintain
- Light weight
- Long lasting

Operating Limit

Temperature : -25.....+200 °C
 Pressure : 25 Bar (Max.)
 Velocity : 20 m/sec

Seal Characteristics

- Single acting
- Balanced
- Inside mounted
- Multi spring
- Independent of direction of rotation

A140U



Applications

- Slurry Pump
- Pump and paper
- Sludge & syrup pump
- Chemical, Petrochemical & Refinery

Operating Limit

Temperature : -45.....+200 °C
 Pressure : 5 Bar (Max.)
 Velocity : 20 m/sec

Seal Characteristics

- Single acting
- Unbalanced
- Inside mounted
- Single helical coil spring
- Independent of direction of rotation

CARTRIDGE SEAL



A47U



A48U





MECHANICAL SEALS FOR AGITATOR

A77RB/D



Applications

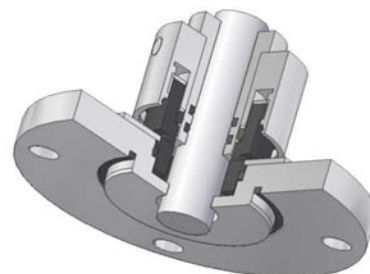
- Food products
- Pharmaceutical products

Seal Characteristics

- Single acting
- Reverse balanced
- Cartridge unit
- Independent of direction of rotation
- Dry running

Operating Limit

Temperature : Amb.....+120 °C
Pressure : Vacuum8 Bar (Max.)
Velocity : 300 RPM (Max.)



A77RB/WB WITH BEARING & A77RB/W WITHOUT BEARING



Applications

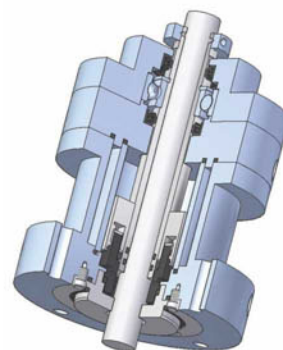
- General light chemicals
- Food products
- Pharmaceutical products
- Corrosive chemicals

Seal Characteristics

- Single acting
- Reverse balanced
- Cartridge unit
- Independent of direction of rotation

Operating Limit

Temperature : Amb.....+180 °C
Pressure : Vacuum8 Bar (Max.)
Velocity : 300 RPM (Max.)



A70U/70U/WB WITH BEARING & A70U/70U/W WITHOUT BEARING



Applications

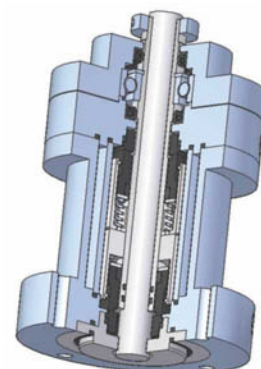
- General chemicals and its vapours
- Light hydrocarbons and its vapours
- Petrochemicals and its vapours

Seal Characteristics

- Double acting back to back seals
- Unbalanced
- Cartridge unit
- Independent of direction of rotation
- Operated with pressurised barrier fluid

Operating Limit

Temperature : Amb.....+200 °C
Pressure : Vacuum10 Bar (Max.)
Velocity : 600 RPM (Max.)
Barrier fluid : Vessel pressure + 1.5 bar pressure



A70B/70B/WB WITH BEARING & A70B/70B/W WITHOUT BEARING



Applications

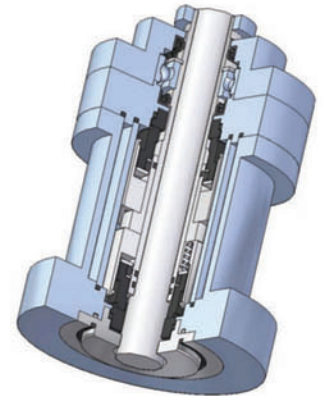
- General chemicals and its vapours
- Light hydrocarbons and its vapours
- Petrochemicals and its vapours

Seal Characteristics

- Double acting back to back seals
- Balanced
- Cartridge unit
- Independent of direction of rotation
- Operated with pressurised barrier fluid

Operating Limit

- Temperature : Amb.....+200 °C
 Pressure : Vacuum35 Bar (Max.)
 Velocity : 600 RPM (Max.)
 Barrier fluid : Vessel pressure + 1.5 bar pressure



COUPLING



FLEXIBLE COUPLING



**PIN BUSH COUPLING
TYPE - KB & KX**



**STEEL LEMINA COUPLING
TYPE - RADEX**



**FLEXIBLE COUPLING
TYPE - ROTEX**



**FLEXIBLE COUPLING
TYPE - ROTEX-GS**



**TYRE COUPLING
TYPE - KT**



**ANTI VIBRATION
MOUNT**



www.activeseals.com



Mfg. : Mechanical Seals, Industrial Pump, Spares and Industrial Goods

Plot No. 62 / 15, Phase-I, Nr.Gujarat Foundry, Opp. Abhyuday Co - Op. Bank,
G.I.D.C. Vatva, Ahmedabad - 382445. (Gujarat) INDIA. Phone : +91-79-25897243 / 44,
25893381,7600040040, E-mail : info@activeseals.com, sales@activeseals.com,
active_eng2002@yahoo.com, **Website: www.activeseals.com**

Surat Office :-

F-51, Silicon Shoppers, Near South Zone Office, Udhna Main Road, Udhna, Surat - 394210
E-mail : marketing@activeseals.com, Mobile: +91-7600052072 / 7600052073